



NAFORMA

National Forest Resource Monitoring and Assessment, Tanzania

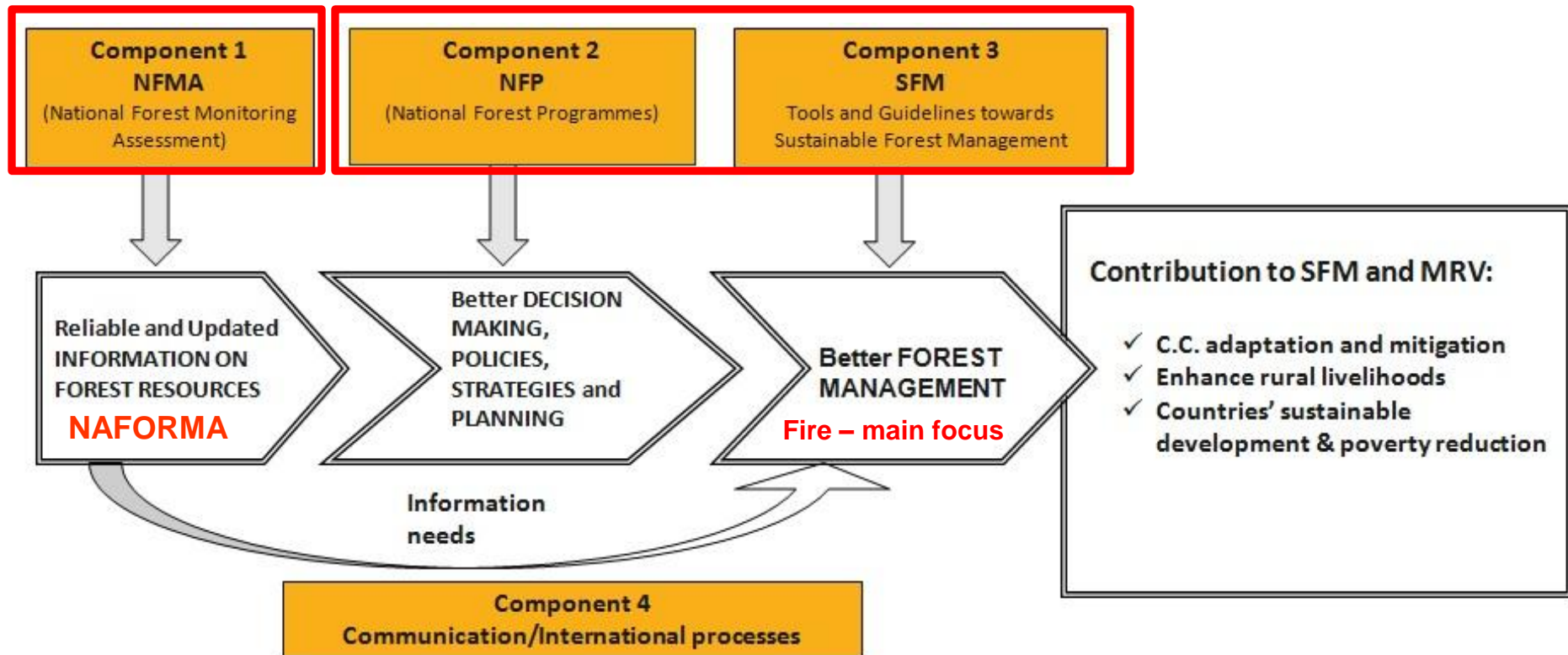


By; Kekilia Kabalimu
Tanzania Forest Service

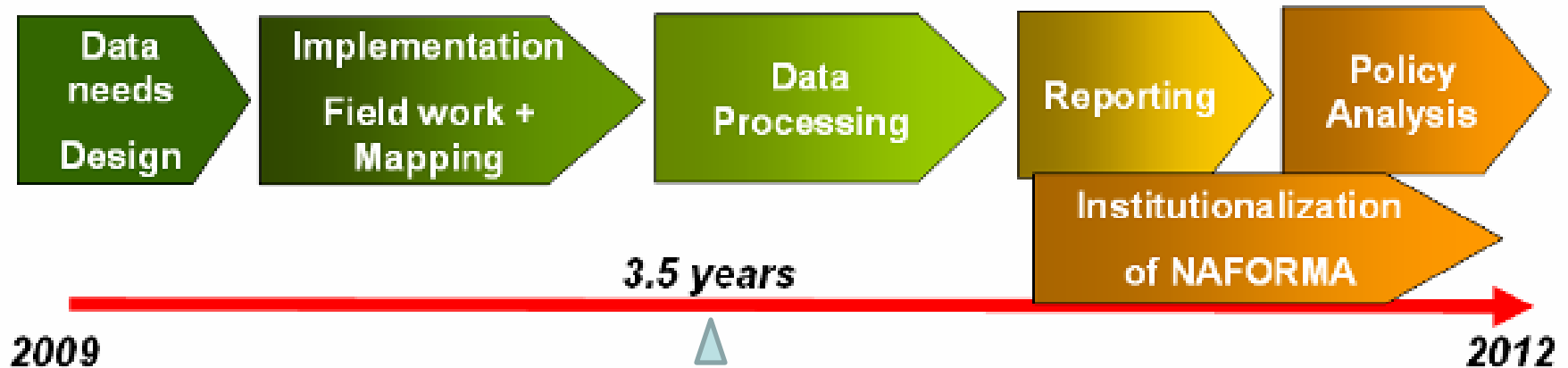
Content

- NAFORMA Overview
- NAFORMA Progress
 - Fieldwork
 - Mapping
 - Data management
- NAFORMA Way forward

NAFORMA



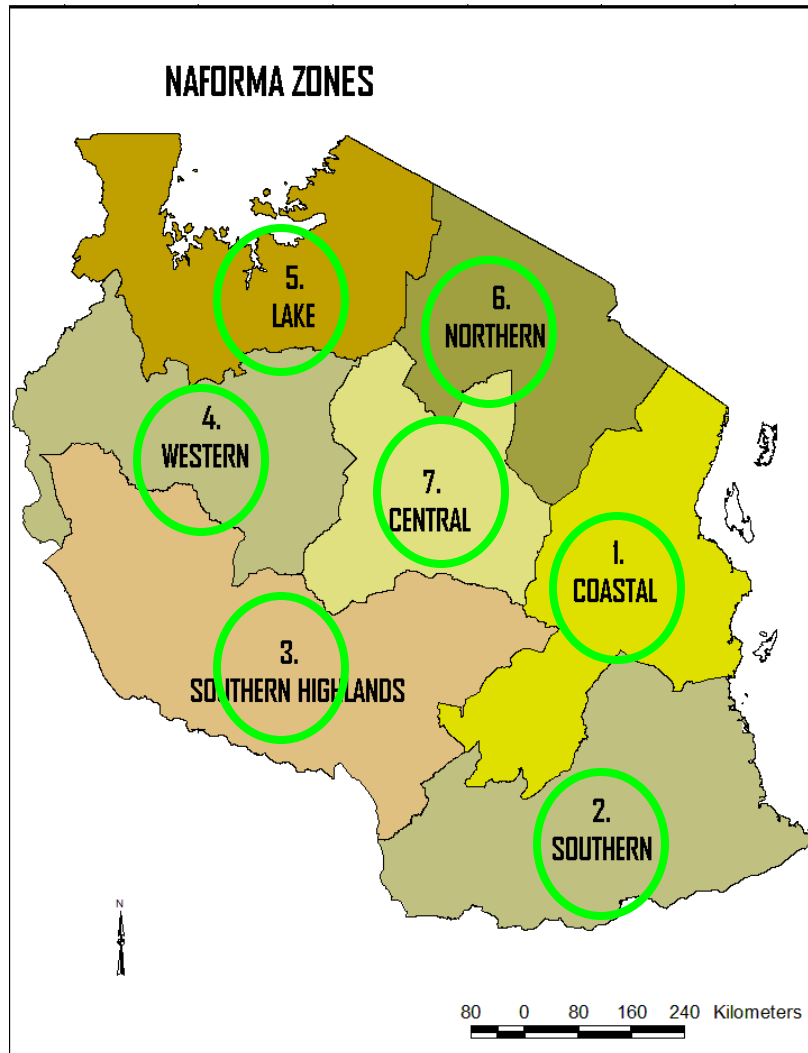
NAFORMA Current Status



NAFORMA main components / Activities

- Field Inventory / data collection **Done - July**
- Mapping **Draft map done – September**
- Data management **October**
- Quality Assurance **Throughout**

Inventory - fieldwork



3100 out of 3400 sample clusters measured (91%). 300 clusters inaccessible (9%).

Eastern zone - 2010

Southern Zone - March 2011

April – May – break for rains

S. Highlands Zone - Aug. 2011

Western Zone - Nov. 2011

Lake Zone - Feb. 2012

Northern Zone - April 2012

Central Zone - April 2012 (major part)

April – May – break for rains

Central Zone - July 2012

Progress inventory - NAFORMA

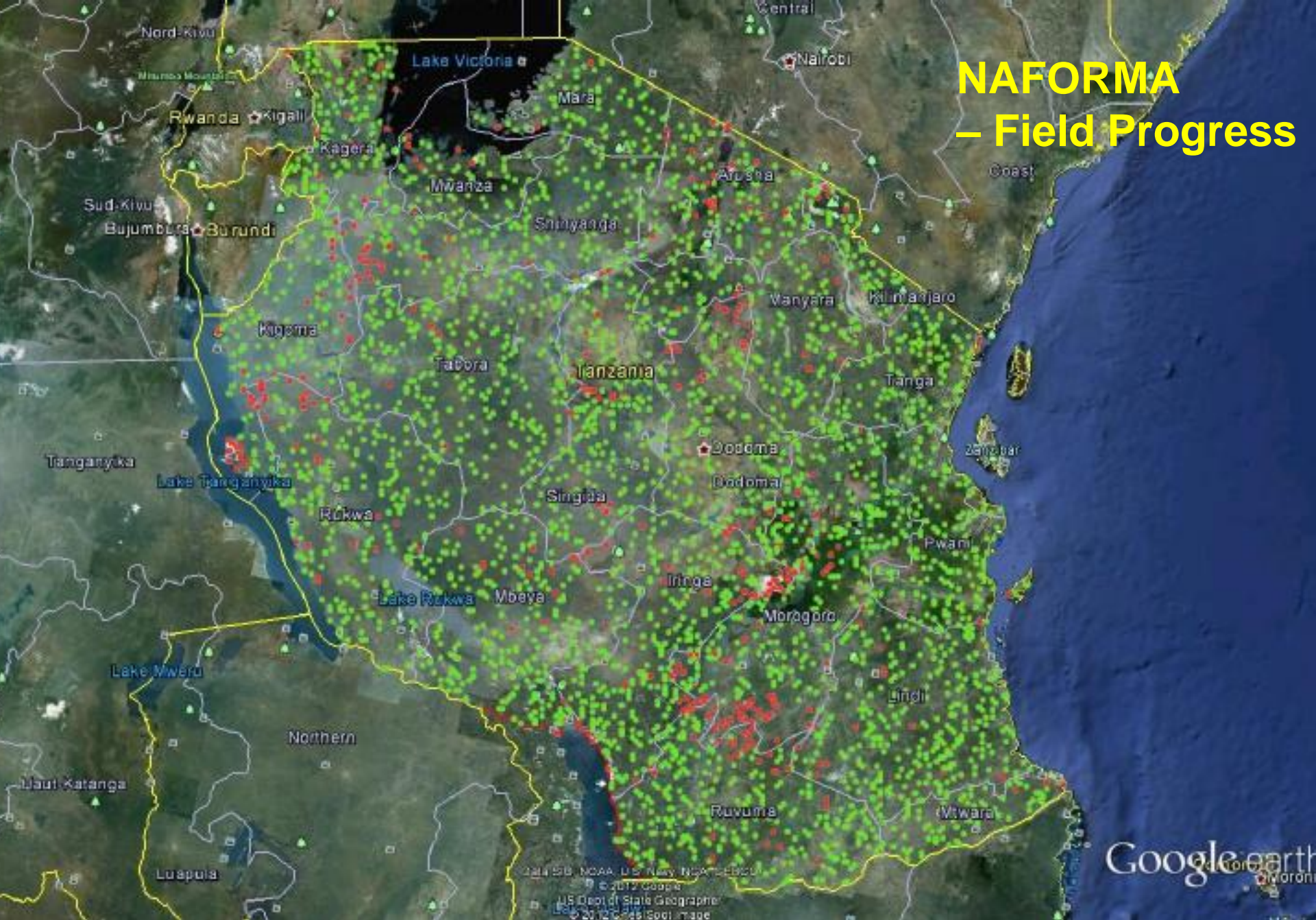
Inventory – socio-economic

Over 4000 Household surveyed:

- Food security and livelihoods
- Energy
- Gender and equity
- Governance of the forests,
- Participation of stakeholders
- Conflicts and rules
- Opinions about forest protection

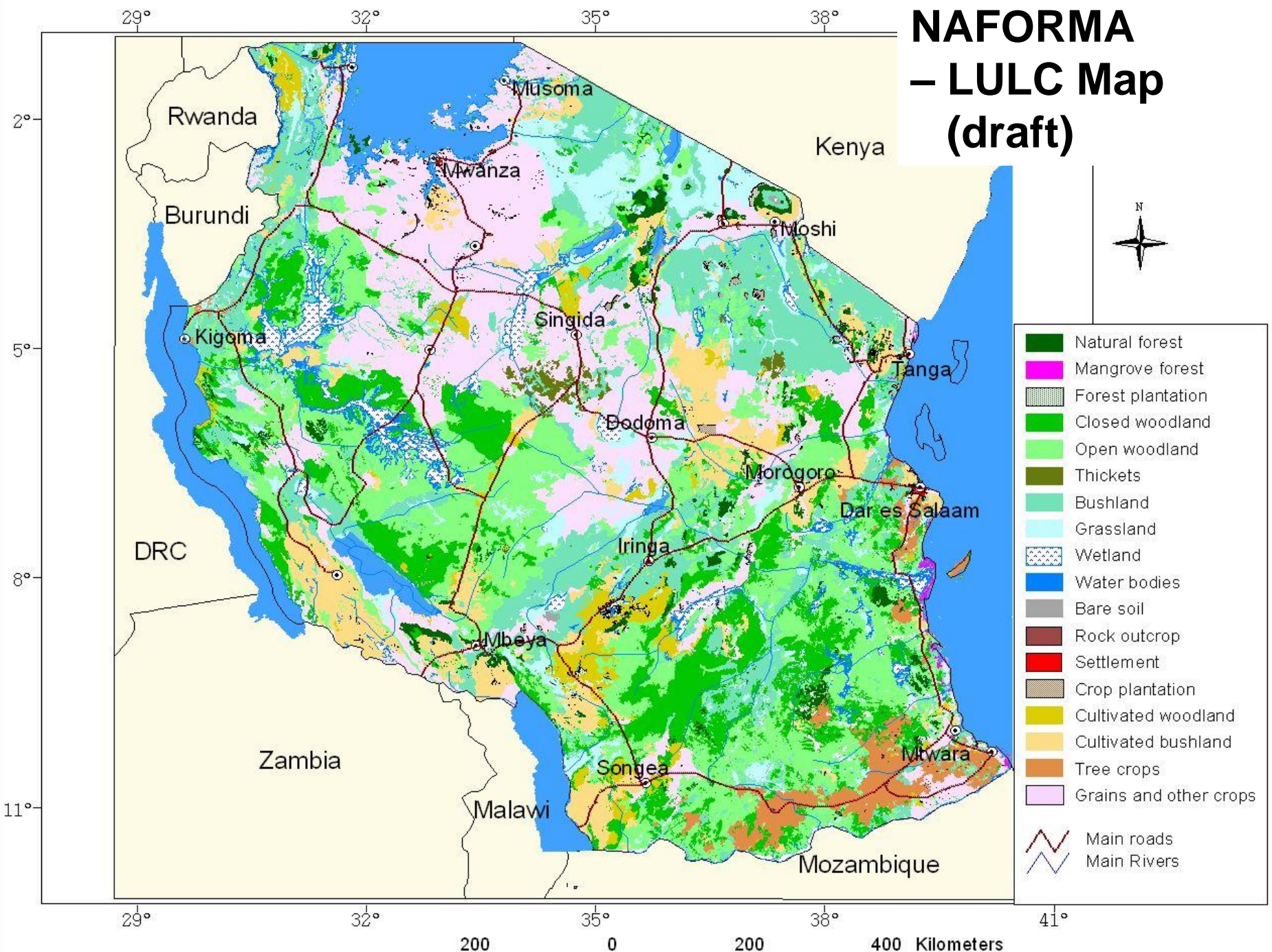


NAFORMA – Field Progress

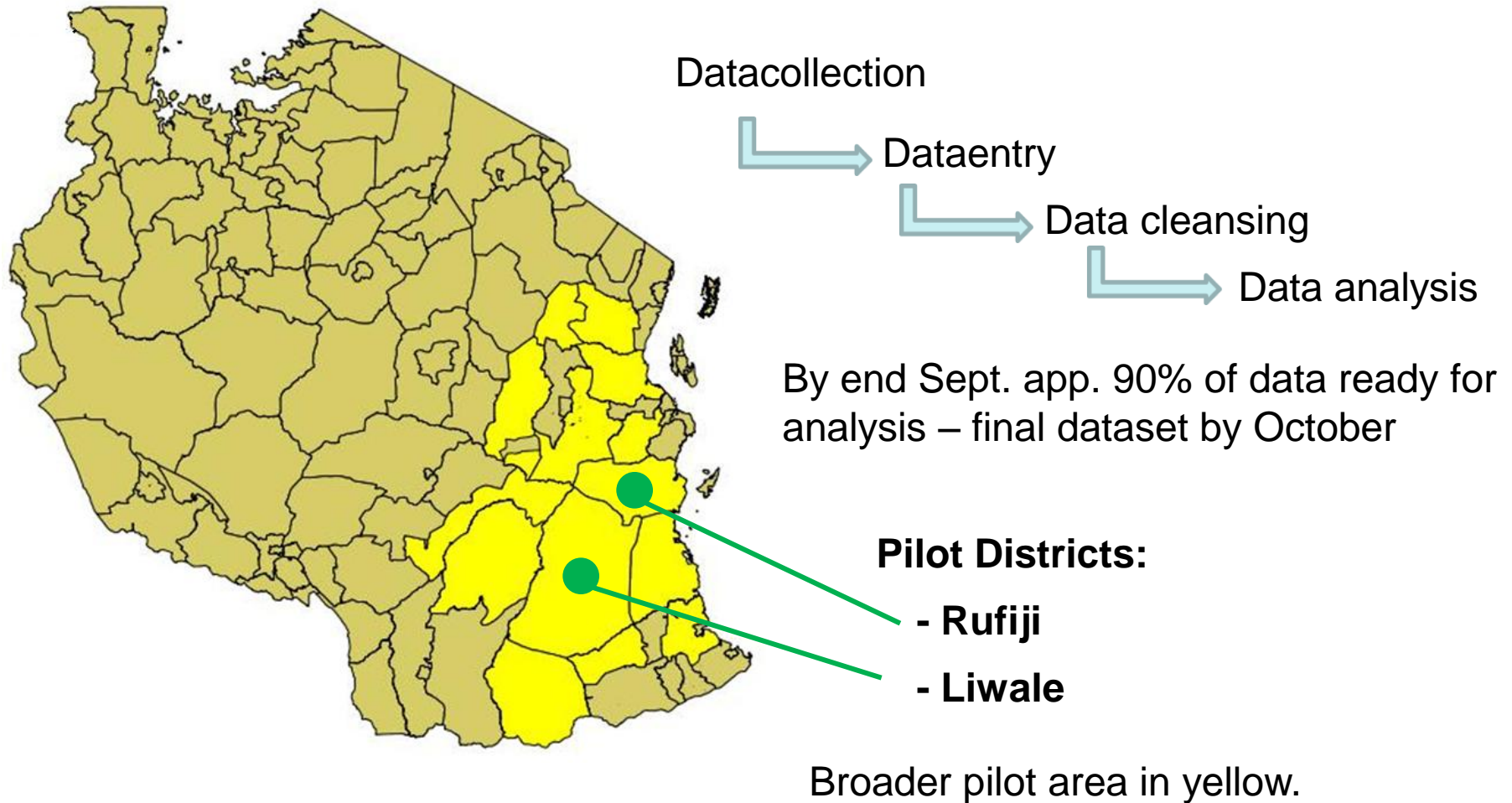


Progress inventory - NAFORMA

NAFORMA – LULC Map (draft)

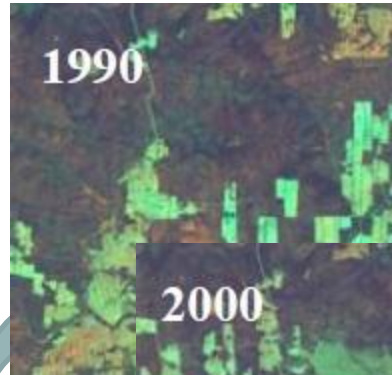


Data analysis



NAFORMA - backbone of REDD+

Deforestation



Land
Cover
Change
Assessment
(in cooperation with UNREDD)

Forest Degradation



Re-measurement
of permanent
sample sites
(5 year cycle)
(TFS-NFMA)



NAFORMA Immediate objectives

- ✓ Establish broad **consensus on NAFORMA process and approach**.
- ✓ Strengthen the capability of MNRT to **collect, analyze, update and manage the needed information** on forests and trees.
- ✓ Develop a **national database/dataset** on forests and trees.
- ✓ Prepare **national maps** of forests and land uses.
- ✓ Conduct national assessment of the forest and TOF and set up a **long term monitoring system** of the resources
- ✓ Define long term monitoring program of the forestry resources, **design specific and management oriented inventory** in priority areas
- ✓ Develop **tools and methods for integration of REDD+ MRV** to NFMA methodology

Way forward

- Main areas in need of additional work are related to:
 - sustainability of continuing the inventory.
 - ensuring data is analyzed and disseminated to stakeholders.
- Putting objective permanent monitoring system in operation within the Forest Resources Monitoring and Assessment Section (FRMA) of the TFS.
- Improving the NAFORMA methodology and field work using previous measurements and RS studies and methods
- Soil/Biomass/Management oriented inventories.
- Training and capacity building

A collection of field equipment and supplies laid out on a tiled floor. Items include a red 'Genuine FIRST AID KIT', a map of Naforma, Tanzania, a GPS device, a compass, a digital altimeter, a red surveying level, a Suunto compass, a knife, a notebook titled 'NAFORMA, TANZANIA', a ruler, and various papers and bags.

NAFORMA